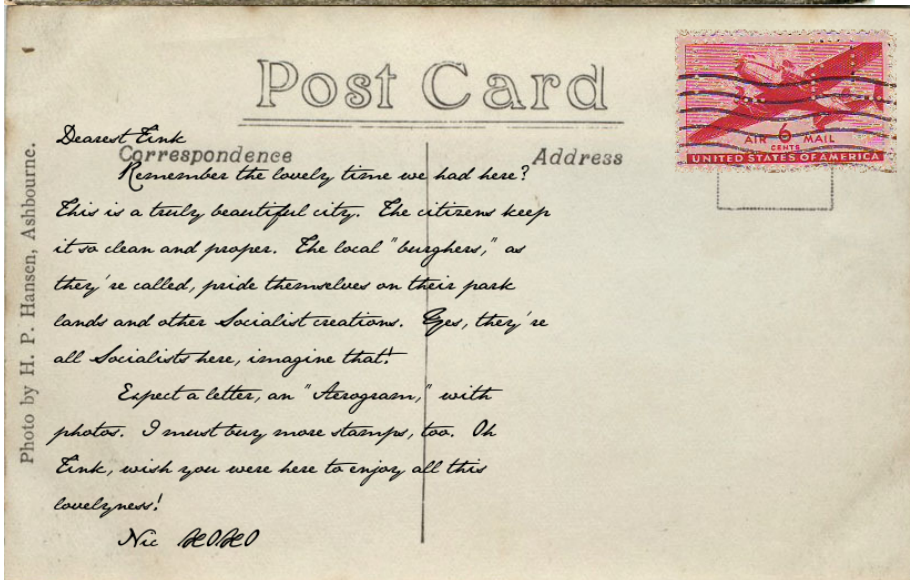


As **Pawn** continues his travels around Milwaukee, he's been sending more postcards.Â This from lovely Lake Park:



And this one from the Washington Park Zoo:



Post Card

Link Darling,

For correspondence

Went to the zoological gardens today. We've
been all to-and-fro on the street cars. Washington
Park is near the center of town, and has the most
naturalistic settings for the animals. Even
monkeys must just think that they're back home
in Africa, or wherever it is they keep them.

Midge said the most indecent things about them!
She is a scamp, that girl is.

I'm just about worn out and think I'll
avail myself of the men's baths for a little
relaxation.

Nic RORO

